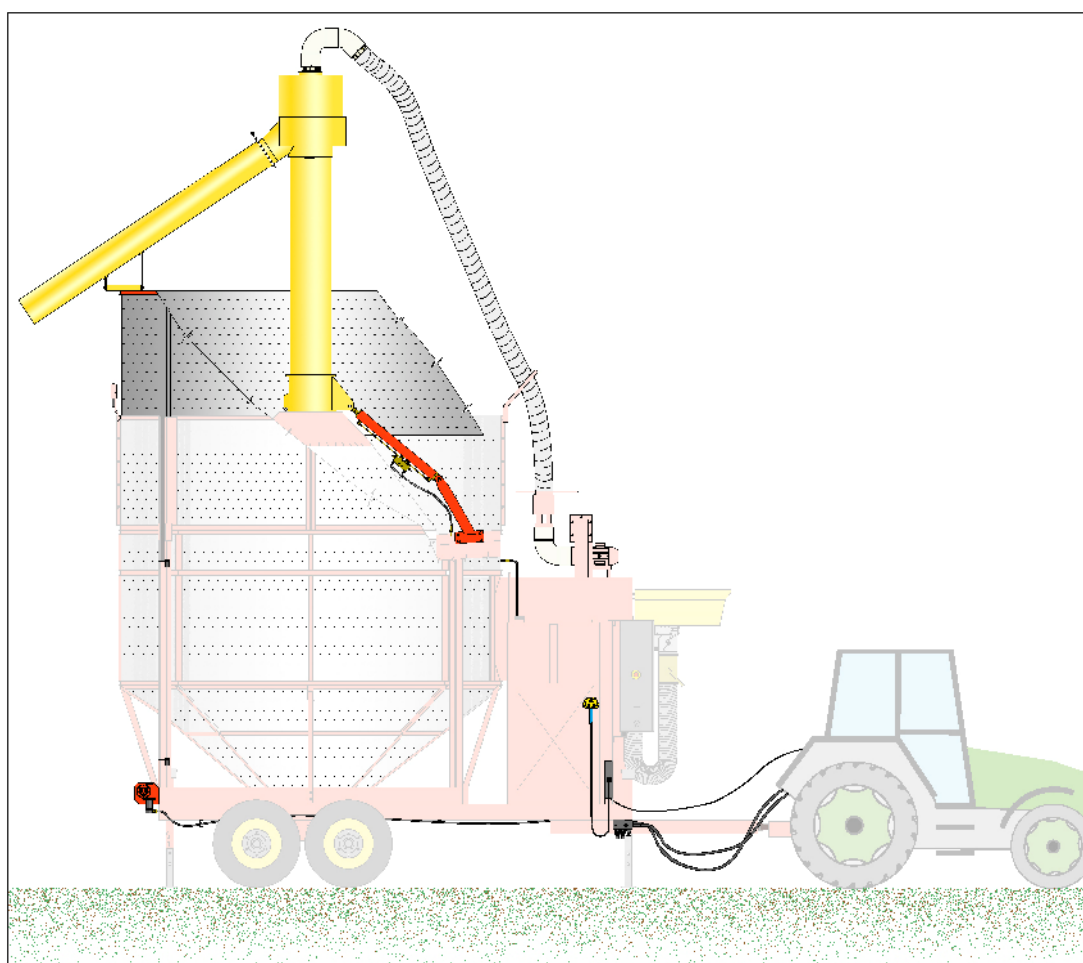


- 1 Введение
- 2 Список компонентов
- 3 Использование и требования безопасности
- 4 Настройки – Неисправности - Обслуживание
- 5 Электрическая схема



FRATELLI PEDROTTI s.r.l.

MACCHINE PER L' AGRICOLTURA

Via Zanardelli 12/a
25030 **MAIRANO**
BRESCIA - ITALY

Tel: 0309975210-0309975119
Telefax: 0309975220
E-Mail: info@pedrottisrl.it
Internet: www.pedrottisrl.it



1 Введение

()



2 СПИСОК КОМПОНЕНТОВ

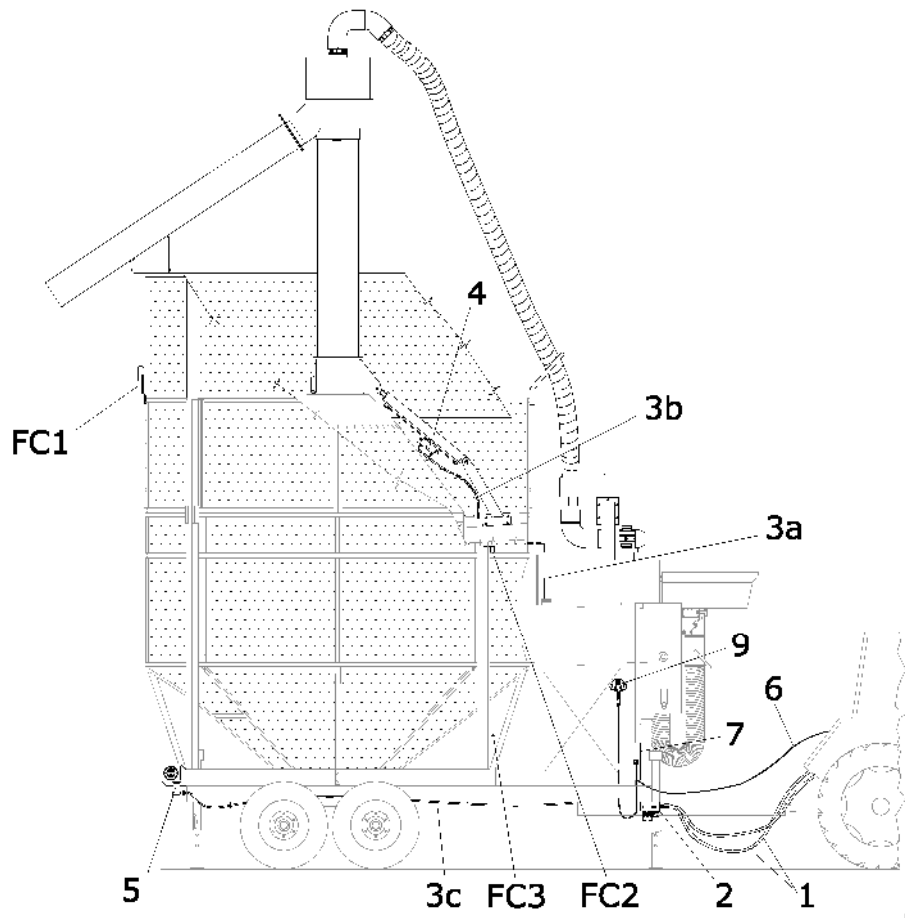
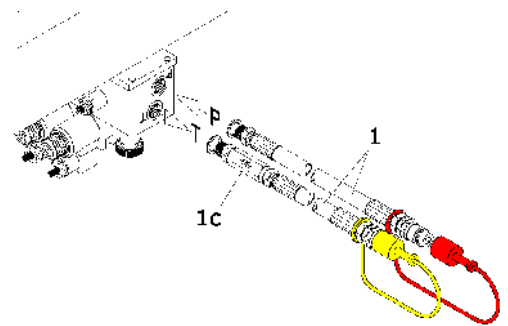


fig.1

1

Ø 3/8", - 2.5

1/2"



P.

T.

(1c).

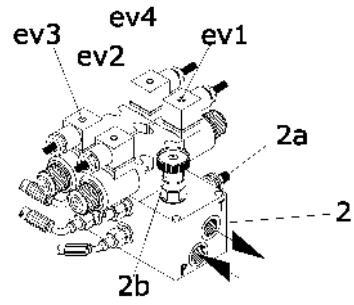


2

(ev1, ev2, ev3, ev4).

(2a)

(2b) (/).

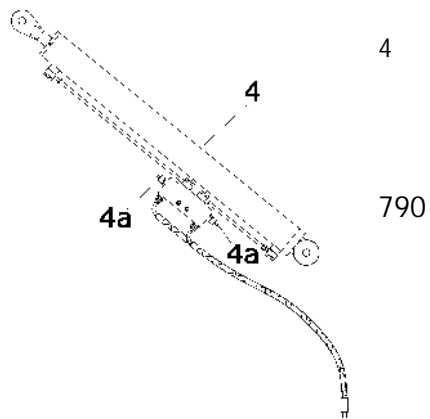


3

3a Ø 1/4"

3b Ø 3/8"

3c Ø 1/4"



4

Ø 60 - Ø

30

790

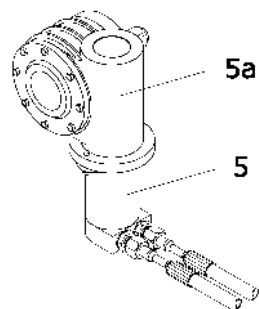
(4a)

5

"12 c"

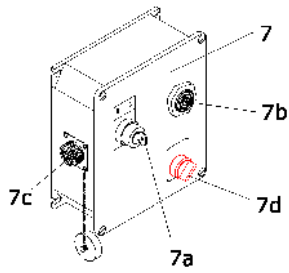
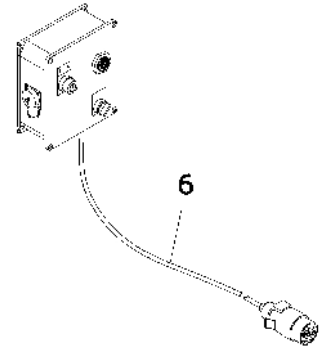
(5a),

40:1.





6



7

12 V.

(7a),

(7b)

(7c)

(7d)

/ for "

".

8

EV1 –

(

).

EV2 –

(

)

EV3 –

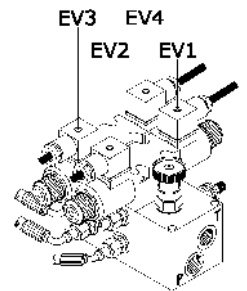
(

)

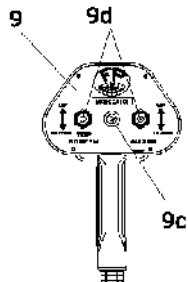
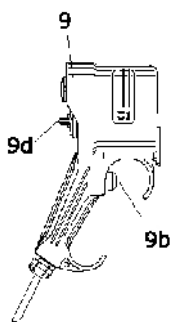
EV4 -

(

)



9



9a –

9b –

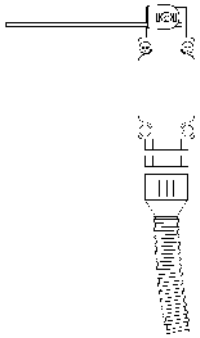
9c –

9d –

9a



10

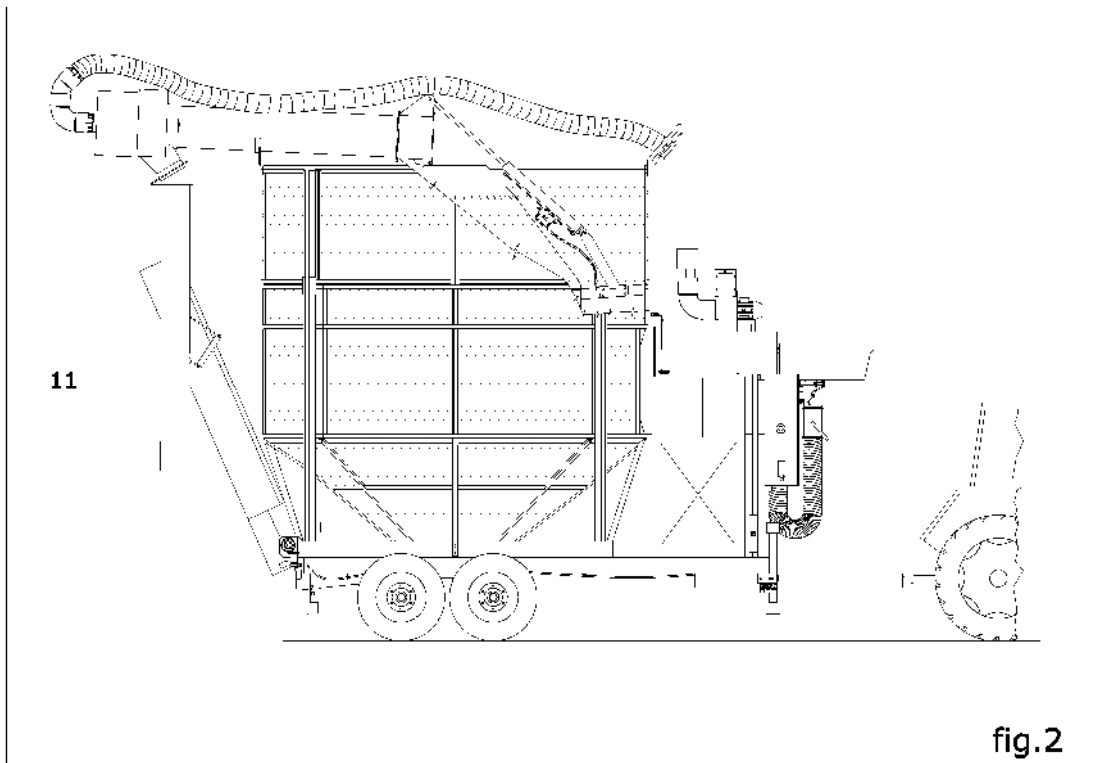


(. " ").

- FC1 – ;
- FC2 – ;
- FC3 – ;

3 Использование и требования безопасности

. 2,





1

2

(11) . 2

3

2

. (. 3).

A



_____:

P.

_____:

B



_____:

T.

_____:

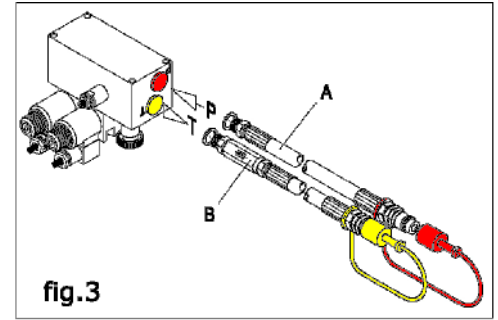


fig.3

4

. 4 (6.1)

5

(9a)

(7c).

6

7

.4

0

(7a)
1.

(7b)

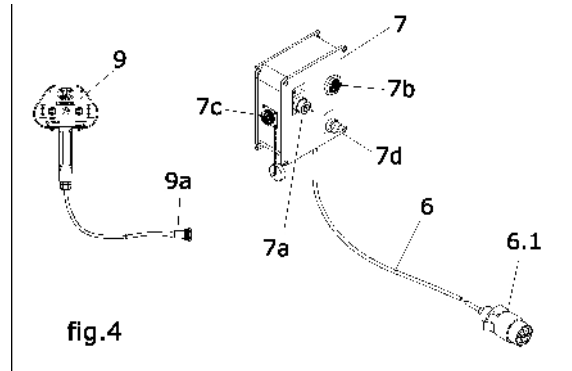


fig.4

8





9

(9)

.5

(9b)

10

AUGER

UP ()

9b

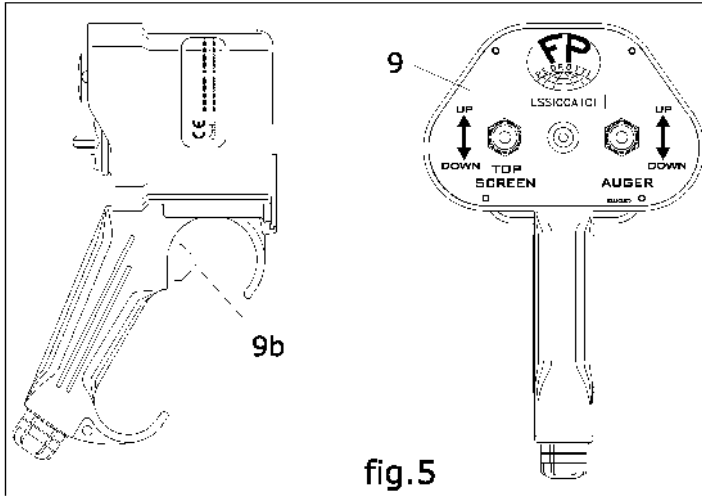


fig.5

11

()

TOP SCREEN ()

UP

– 35/40

12

DOWN ()

.6.

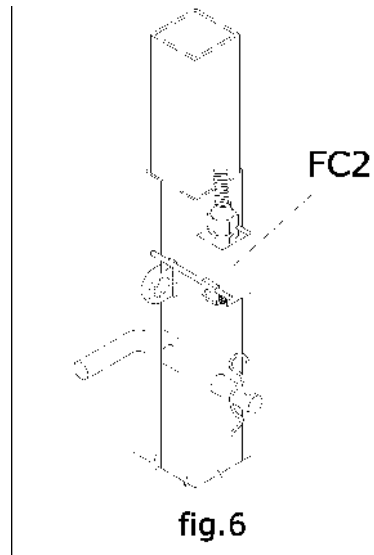
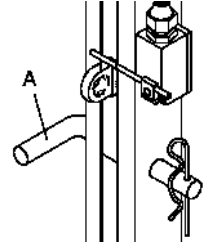


fig.6

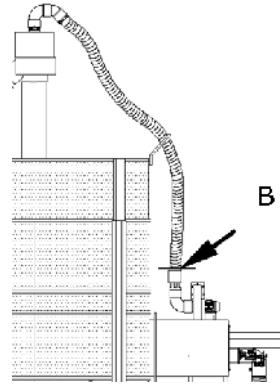


1

A



B



C



:

!

2

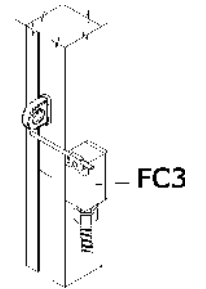
3 - 4 - 5 - 6 - 7 - 8 - 9

3

()

:
DOWN ()
(FC3)

TOP SCREEN

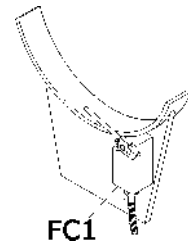


4

AUGER ()

:
DOWN ()

(FC1)





4 Настройки – Неисправности - Обслуживание

1

.11 (2a).

110
UP ()
().

AUGER ()
()

(P).

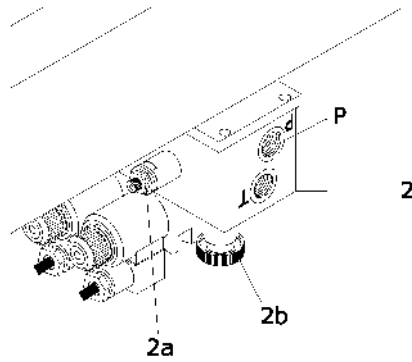


fig.7

2

(2).

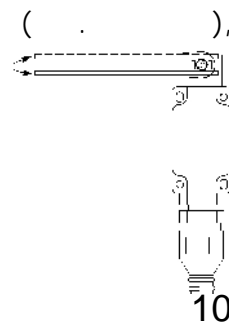
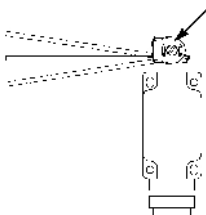
.7 (2b)

6 /

3

-
-
-

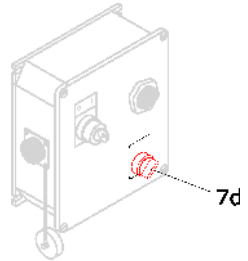
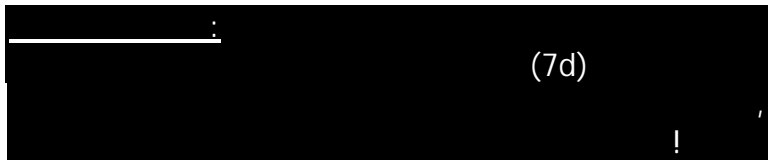
(FC1)
(FC2)
(FC3)





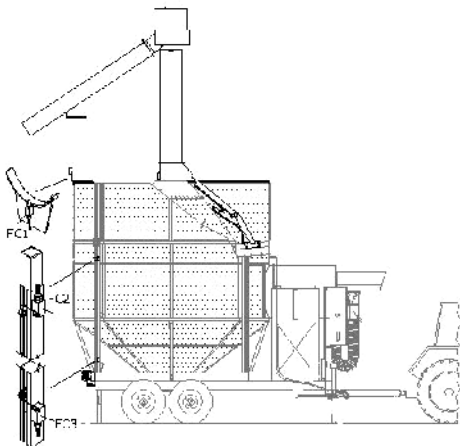
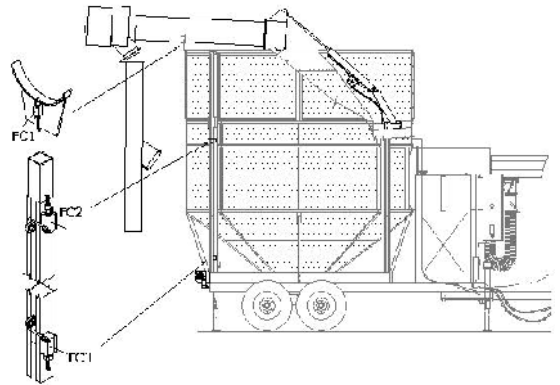
Обнаружение неисправностей

() ()
).
 / . " "
 " "



4

N°1:



N° 2:

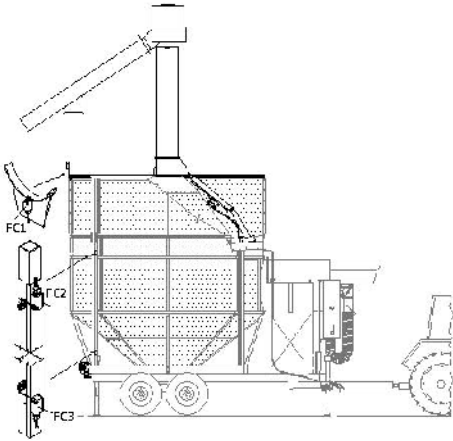
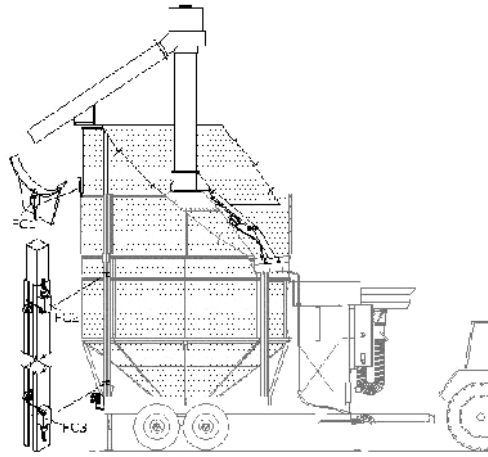
FC2.

FC1



N° 3:

FC3.



N° 4:

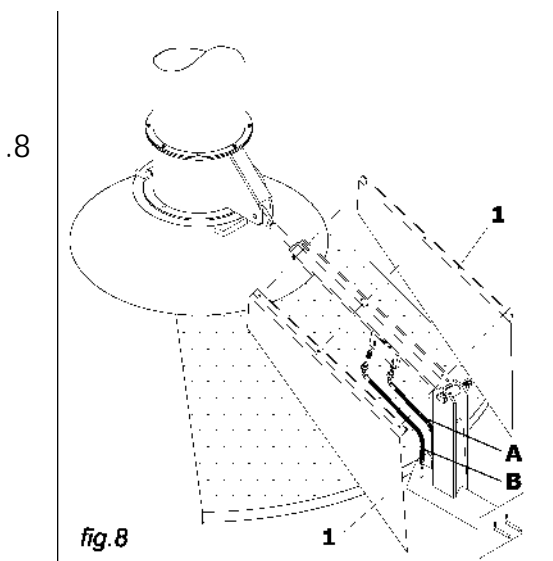
FC1 FC3.

Обслуживание

(A-B)

200
2000

(1)





5 Электрическая схема

